



ISO 13485



Company profile

Since the establishment, SonoScape has committed to provide high standard medical equipments for healthcare of human beings. Nowadays, we are specialized in manufacturing and developing ultrasound systems and transducers. It is our faith to supply customer-focused and reliable equipments for all clinics and hospitals.

Sonoscape has proudly introduced the world's first 15 inch LCD color HCU, and a lot of other high performance ultrasound systems and transducers. We will strive to provide the equipments with optimal price and state-of-the-art technology for clinical application, diagnosis and treatment.

Quote from the analyst of

FROST & SULLIVAN

"SonoScape Co. Ltd. has exhibited exceptional entrepreneurial capabilities in developing S8 - the portable colour Doppler System. The advanced 4D capabilities of the ultrasound unit are customised for the high-end European market and yet available at much affordable prices. The company's priority in maintaining high levels of quality in its product lines is well supported by the negligible after-sales costs associated with its ultrasound systems. Also with the launch of SSI-1000, the hand carried ultrasound with multiple clinical applications; SonoScape has made significant strides towards establishing itself as a global medical equipment manufacturer."

Mr. Krishanu Bhattacharjee

Company Milestone

- 2002: Company Founded
- 2003: Released 1st 15" LCD Portable Color Doppler system in the world
- 2004: Released 1st PC platform Color Doppler system in China
- 2005: Awarded as the High Technology Company by the government
- 2007: Awarded as "CHINA TOP BRAND" in the Medical Equipment Industry
- 2007: Released 1st Real time 4D technology in China
- 2008: Awarded by FROST & SULLIVAN "European Entrepreneurial Company 2008"
- 2008: Awarded as the "Flagship Company" in the Medical Equipment Industry in China
- 2009: Awarded by FROST & SULLIVAN "Product Quality Leadership Award 2009"

SonoScape

Yizhe Building, Yuquan Road, Shenzhen, 518051, China
Tel: 86-755-26722890 Fax: 86-755-26722850
E-mail: sonoscape@sonoscape.net www.sonoscape.com

S20

Touching Your Needs
with Optimum Solutions



SonoScape

www.sonoscape.com

S20, the newest color Doppler system from SonoScape, is specially designed for full ultrasound applications, including Radiology, Cardiovascular, OB/GYN and others. This system is featured with innovative ergonomic design, latest ultrasound technology and powerful workflow.

As a workflow enhanced ultrasound system, S20, combining 17" monitor with 10.4" touch panel together, will provide the most smoothly work flow which doctors have never experienced before. The high definition image quality is another strength for S20. Thanks to the innovative technologies, such as Multi-beam processing and μ -scan, the doctors will be confident for even toughest patients. So, from technology to imaging, from archiving to reporting, the S20's innovation will bring all the best for clinical practice in everyday.



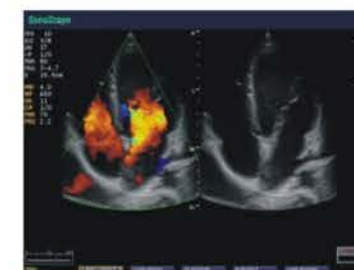
Innovative Ergonomic Design

- ◇ 17" high resolution wide LCD with articulate arm, to minimize the fatigue of eyes and shoulders from daily scanning.
- ◇ 10.4 inch touch screen is the fastest way to adjust parameters and control the system.
- ◇ Convenient front and back handles and four wheels with lock can be used for transportation with high mobility.
- ◇ Standard four sockets are universal for all types of transducers, including the special probes like, 4D, Bi-plane and intraoperative transducers.



Powerful Imaging Technology

- ◇ Multi-beam Processing
Providing high quality image without sacrifice of time resolution
- ◇ Tissue Harmonic Imaging
Optimizing spatial and contrast resolution in grayscale imaging
- ◇ μ -scan Technology
Reducing speckles from images as well as enhancing the borders of tissue
- ◇ Easy Sampling for Doppler
Refreshing the sample volume/line automatically, without press the key of "update"
- ◇ Smart Cutting for 4D
Before 4D volume scanning, the doctor can remove the noise in 2D image
- ◇ Trapezoidal Imaging
Extending far field of view in linear transducers
- ◇ Panoramic Imaging
Go beyond the limitation of transducer's length. Providing an ultra-wide sight of big lesions.



Cardiac Flow



Kidney Flow



Early OB



Thyroid Flow



Mitral Valve



CCA in PW Doppler